

In the beginning
was First Woman.



Advanced Reading Copy




Her name was Hunku.
Hunku was immortal
and never aged.

All the animals and plants loved to hear her
sing to them. But Hunku was very lonely.

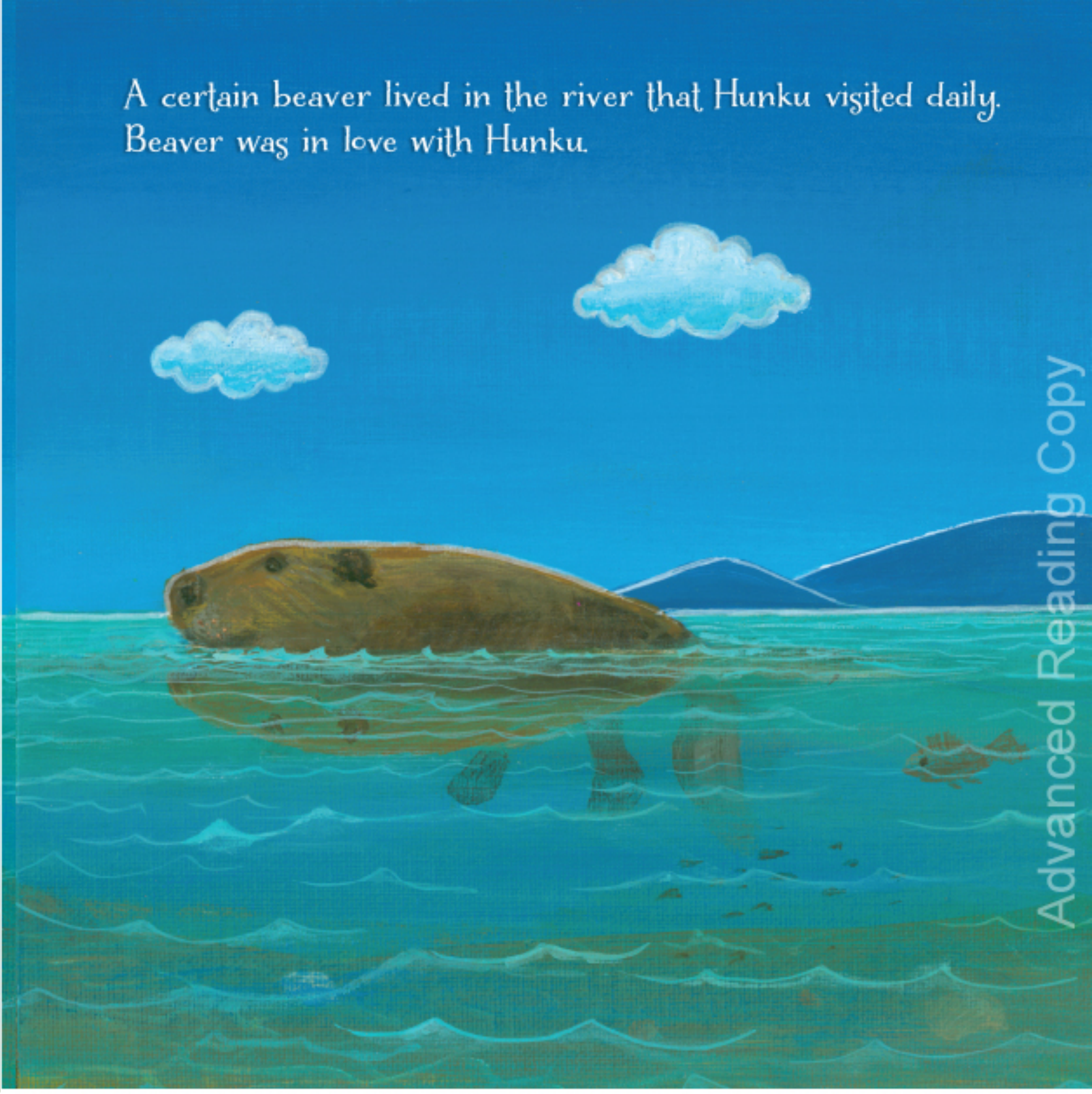


Advanced Reading Copy

A woman with long dark hair, wearing a brown, fringed tunic, sits on a grassy bank by a river. She is looking down with a sad expression. The river is blue with a small fish visible. The sky is blue with a single white cloud. The background shows rolling hills.

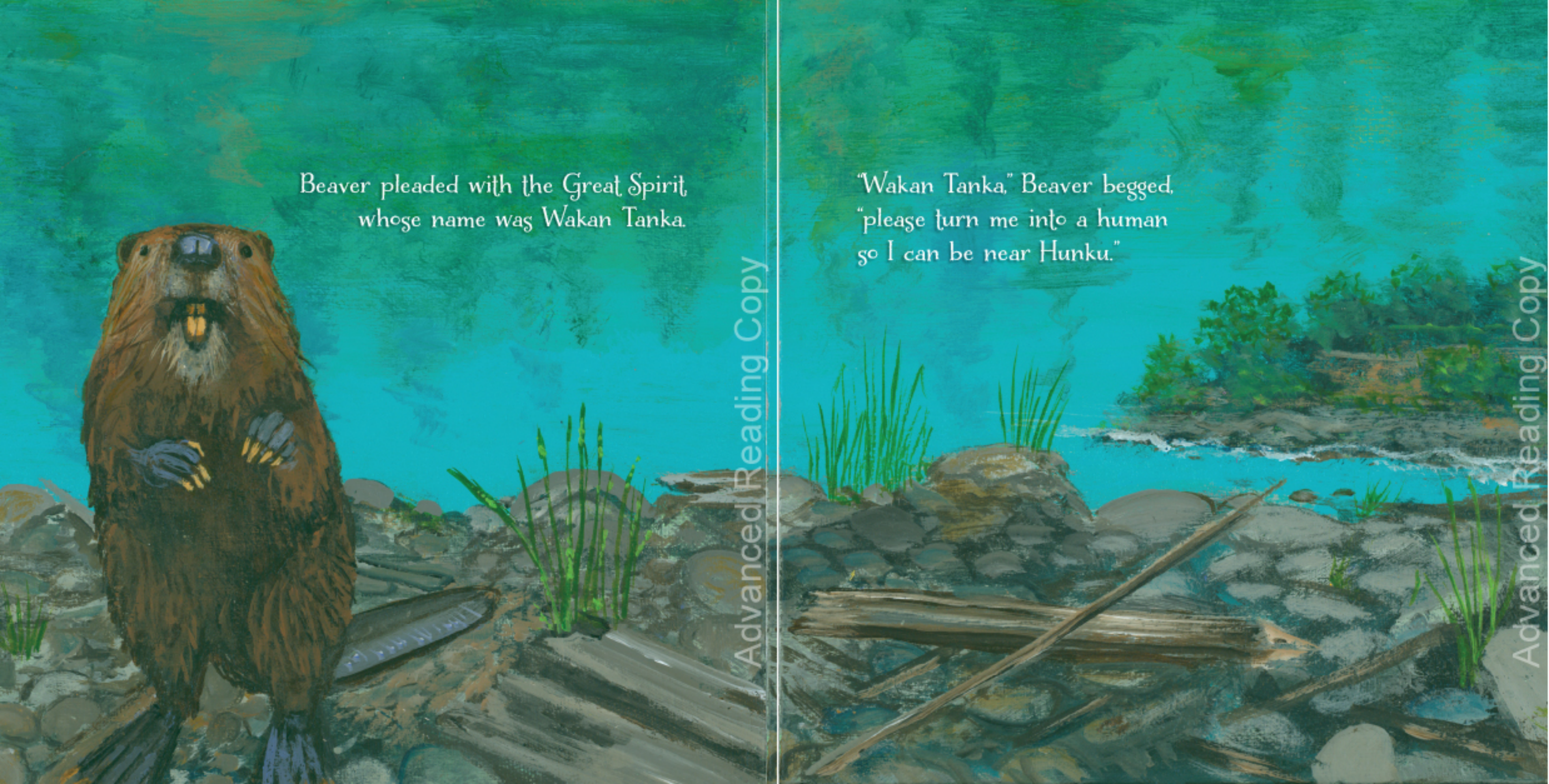
Hunku would go to the riverbank every day and cry herself to sleep.

Advanced Reading Copy

A brown beaver is swimming in a blue river. The beaver's head and back are above water, while its legs are visible below. The water has wavy patterns. The sky is blue with two white clouds. The background shows rolling hills.

A certain beaver lived in the river that Hunku visited daily. Beaver was in love with Hunku.

Advanced Reading Copy

A beaver with brown fur and large teeth stands on a rocky bank. In the background, a waterfall flows over rocks into a pool of water. The scene is set in a natural, outdoor environment with green grass and trees.

Beaver pleaded with the Great Spirit,
whose name was Wakan Tanka.

“Wakan Tanka,” Beaver begged,
“please turn me into a human
so I can be near Hunku.”

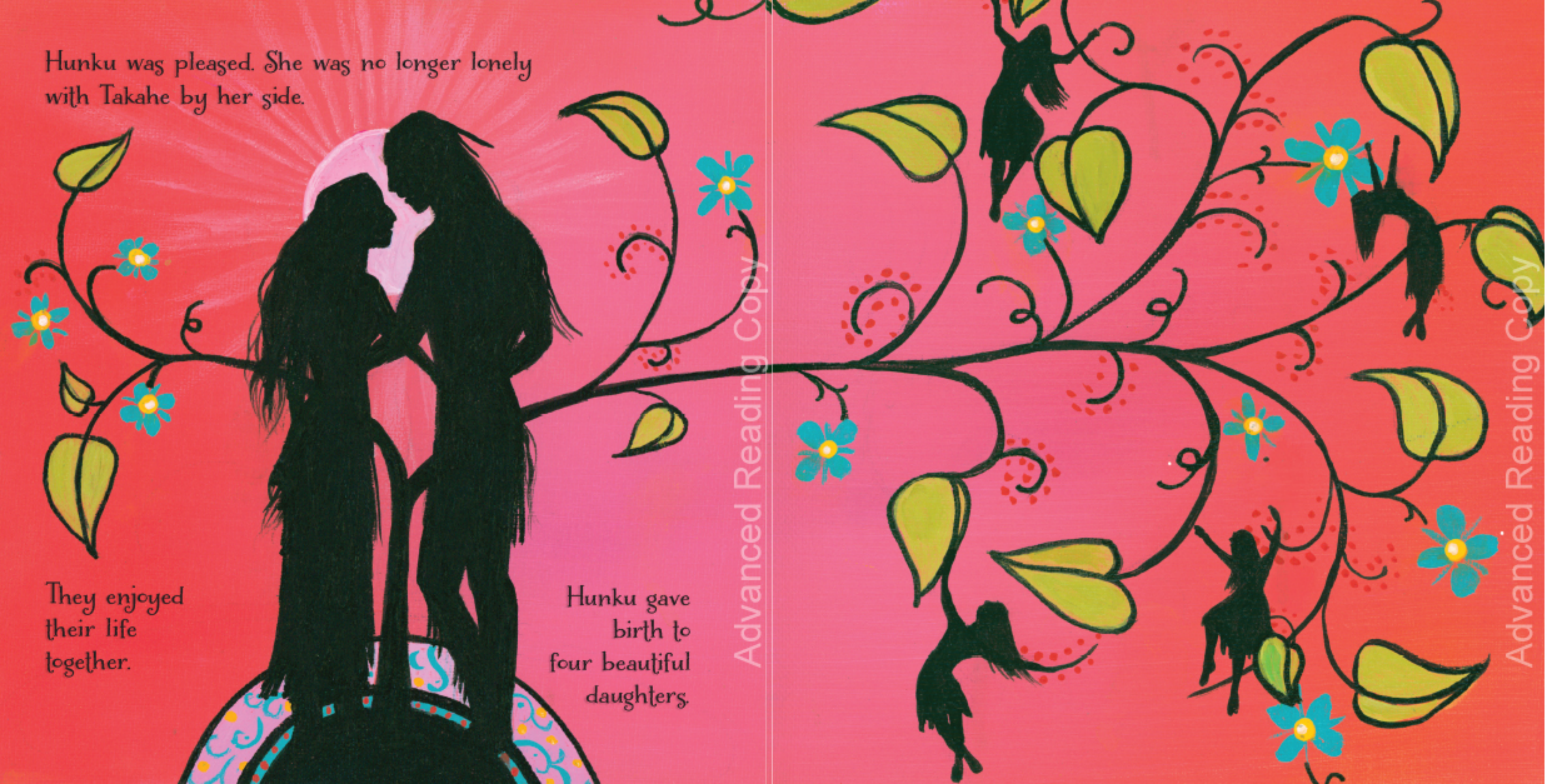
Hunku was pleased. She was no longer lonely with Takahe by her side.

They enjoyed their life together.

Hunku gave birth to four beautiful daughters.

Advanced Reading Copy

Advanced Reading Copy



The daughters,
being mortal
grew up quickly
and married the
four sons of Tate,
the Spirit of the Wind.



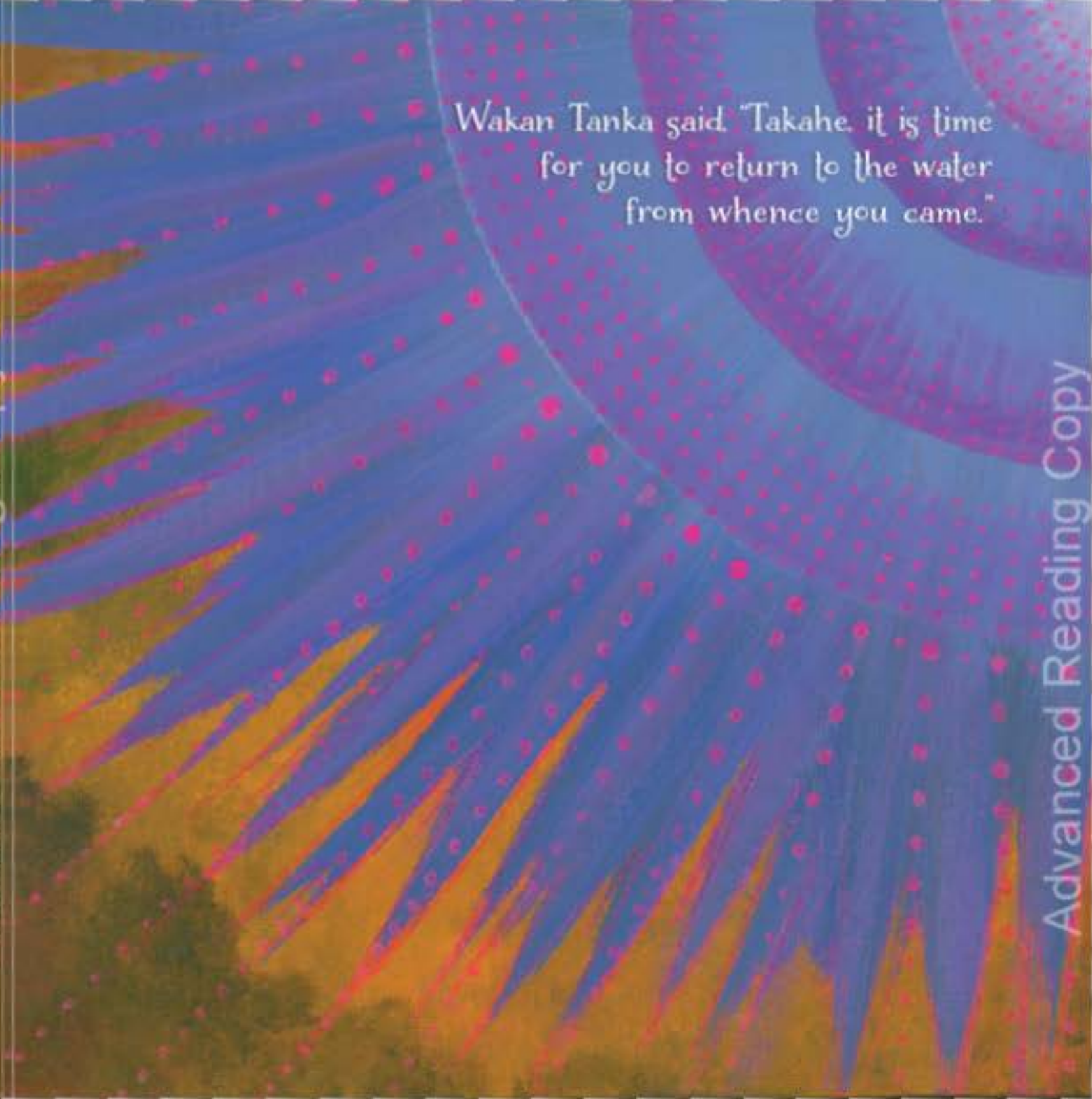
Each couple
journeyed to one
of the four directions
to form a sacred
medicine wheel.

Then, the day that Takahe was dreading finally arrived.



Advanced Reading Copy

Wakan Tanka said, "Takahe, it is time for you to return to the water from whence you came."



Advanced Reading Copy